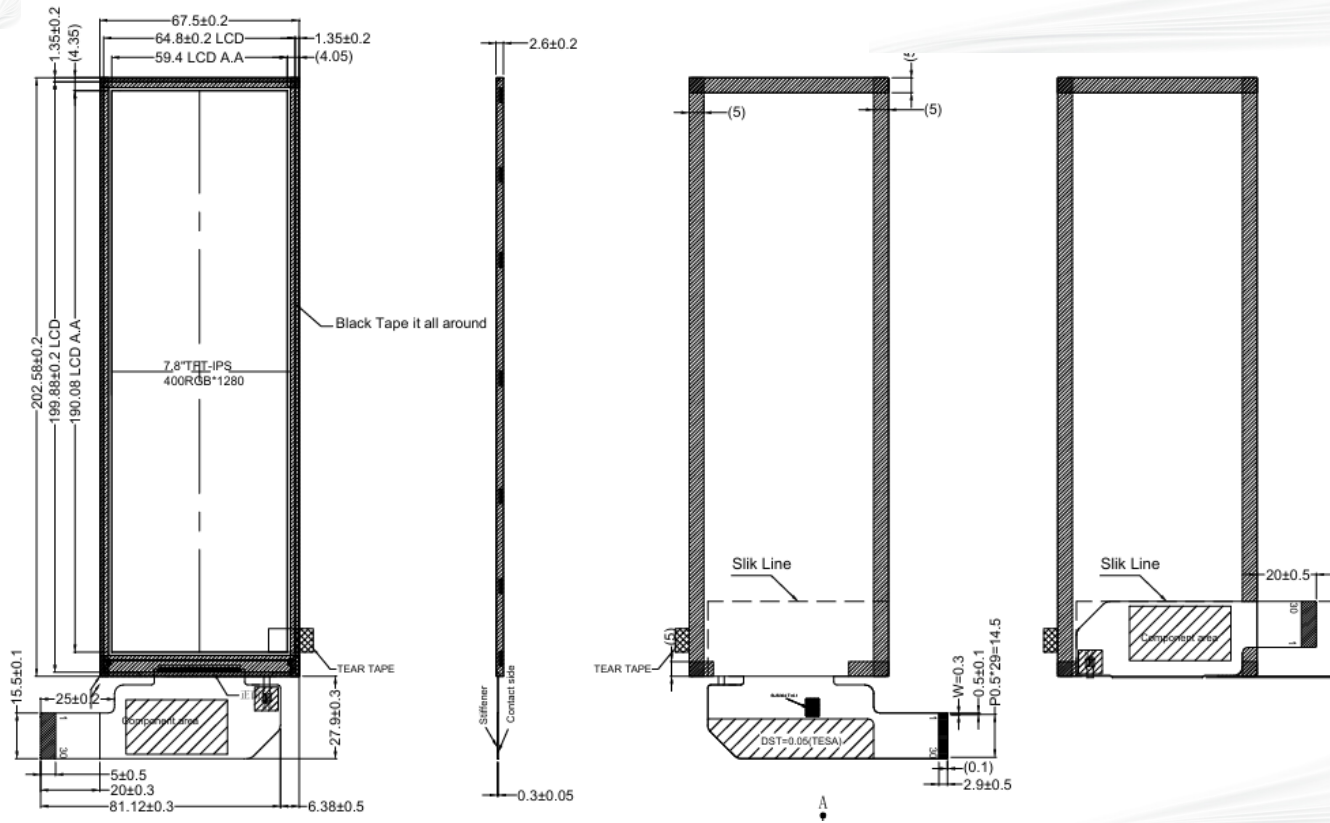


7. 84" TFT



ITEM		STANDARD VALUE	
Viewing direction		Full Viewing	
Display mode		Transmissive	
Operation temp		-20°C~+60°C	
Storage temp		-30°C~+80°C	
Driver IC		FL7703NI	
Interface		MIPI 4L	
Backlight		White(12LED)	
Brightness		300(TYP)cd/m2	
PIN	SYMBOL	PIN	SYMBOL
1	GND	16	CKN
2	VCI	17	CKP
3	VCI	18	GND
4	IOVCC	19	DN1
5	GND	20	DP1
6	RESET	21	GND
7	TE	22	DN0
8	GND	23	DP0
9	GND	24	GND
10	DN3	25	VSP
11	DP3	26	VSN
12	GND	27	LEDK
13	DN2	28	LEDK
14	DP2	29	LEDA
15	GND	30	LEDA

メモ :