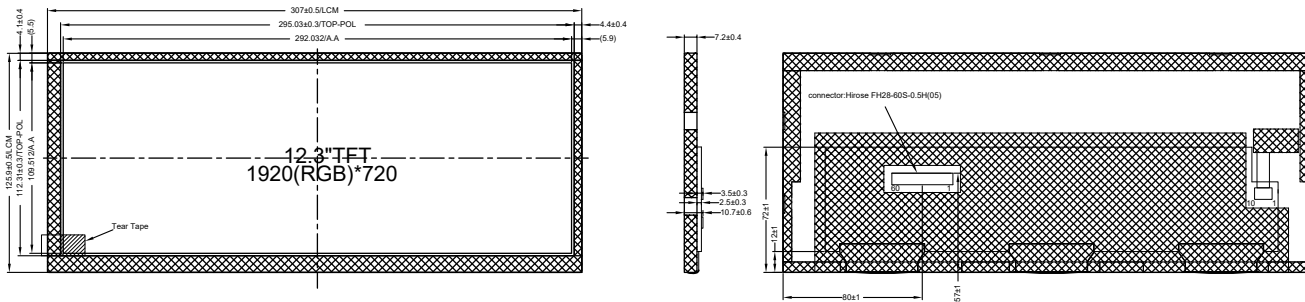


12.3" TFT



メモ :

ITEM		STANDARD VALUE			
Viewing direction		FULL VIEW			
Display mode		Transmissive			
Operation temp		-30°C ~ 85°C			
Storage temp		-40°C ~ 90°C			
Driver IC		HX8290&HX8695			
Interface		Dual-LVDS interface			
Backlight		36 White LEDs			
Brightness		1000 cd/m ²			
PIN	SYMBOL	PIN	SYMBOL	PIN	SYMBOL
1	GND	21	ERXIN0+	41	ATREN
2	VCC	22	GND	42	NC
3	VCC	23	ERXIN1-	43	VOTP
4	GND	24	ERXIN1+	44	GND
5	ORXIN0-	25	GND	45	LR
6	ORXIN0+	26	ERXIN2-	46	TB
7	GND	27	ERXIN2+	47	FAULT
8	ORXIN1-	28	GND	48	NC
9	ORXIN1+	29	ERXCLKIN-	49	LEDA
10	GND	30	ERXCLKIN+	50	LEDA
11	ORXIN2-	31	GND	51	NC
12	ORXIN2+	32	ERXIN3-	52	NC
13	GND	33	ERXIN3+	53	LEDK1
14	ORXCLKIN-	34	GND	54	LEDK2
15	ORXCLKIN+	35	NC	55	LEDK3
16	GND	36	RESET	56	LEDK4
17	ORXIN3-	37	STBYB	57	NC
18	ORXIN3+	38	SCL	58	NTC_A
19	GND	39	SDA	59	NC
20	ERXIN0-	40	CSB	60	NTC_K